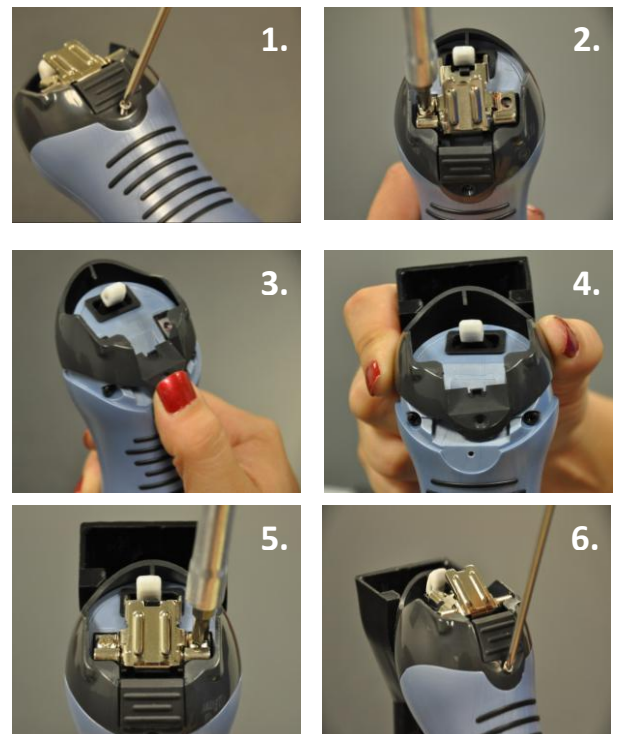


Clipper Vac® Attachment

Compatible with Wahl® Storm / Switchblade / Power Grip



- Step 1** Remove small single screw on underside of clipper head.
- Step 2** Remove both screws to release and remove metal latch.
- Step 3** Once all 3 screws and metal latch are removed, you can remove the top housing by pushing up with your thumb.
- Step 4** Replace the top housing with our attachment.
- Step 5** Replace metal latch and fasten with screws.
- Step** Replace small single screw on the underside of the attachment.



M.D.C. Romani, Inc./Clipper Vac® is not affiliated with, authorized by or endorsed in any way by Wahl®.